



A Publication of the Louisiana Watercolor Society, established in 1968

Waterworks

January, February, March 2012 Newsletter, volume 44, number 1

Spring Member Show

CAPITOL WATERS: ART AT THE ARCHIVES

Address: Louisiana State Archives
3851 Essen Lane, Baton Rouge, Louisiana 70809
Located between I-10 & I-12 just before the I-12 overpass.

Important Dates:

Thursday, Mar. 1: **Drop off** your paintings **9-10:00a.m.**
(Please be prompt.)

Saturday, Mar. 3: **Reception** 2-4 p.m.

All members and their guests are invited.

Friday, Mar. 30: **9:00-10 a.m. --- Pick up** paintings.

Preregistration Procedure:

In order to expedite the hanging of the show, please mail your entry check for \$20 along with a SASE (self addressed stamped envelope) to:

Anne Thigpen
18829 Scivicque Ln
Port Vincent, LA 70726
Show Chair Anne Thigpen (225)279-8637 or
athigpen@eatel.net.

Judge: Keith Andry NWS, LWS <http://www.andryfinearts.com>

Keith is a Signature Member in the National Watercolor Society, the Transparent Watercolor Society of America, and the Louisiana Watercolor Society. With several "Best of Show" awards and other top awards, Keith's reputation has brought his works to many public and private collections throughout the United States and Europe

Entry fee: \$20 for 1-3 paintings.

Paintings must be new to our member show *and* never shown before at the Archives.

Exhibit Rules:

2012 dues must be paid to participate in member shows. Original watercolors on paper, neutral mats and wired frames. (Original means no prints and no copies of copyrighted photos or pictures of any type.)

Since the Archives is a State building, all art must be suitable for viewing by people of all ages (no nudes).

More details on www.LWSart.org

Members' Meeting

General meeting to view the 2012 jpeg entries:

Date: Sunday, January 29, 2012, 2-4 p.m.

Location: New Orleans Museum of Art

The meeting is open to all members & their guests.

Louisiana Watercolor Society's 42nd Annual International Exhibition, juried by Dean Mitchell, is right around the corner. The **entry deadlines** are postmarked by January 17th, and hand delivered by January 19th. Don't let this wonderful opportunity slip by. If you've misplaced your prospectus, it is available online at: www.lwsart.org

The list of entries accepted in **42nd International Exhibition** will be posted on www.LWSart.org by March 20.

2012-2013 Slate of Officers

President: Laura Mitchell LWS

1st Vice-President: Susan Copping LWS

2nd Vice-President: Howard Weitsen

Corresponding Secretary: Veronica Thomas

Recording Secretary: Karen Stakelum LWS

Treasurer: Monica Bishara LWS

Board Members at large:

Dana Agnew, Rita Congemi and Jeannie Wilke

Past President: Philippa Gillen

Elections will be held on Jan. 29. There will be no nominations from the floor. The term of office is one year. With the exception of the treasurer and secretaries, all officers and board members-at-large may hold a position for two consecutive years.

Installation will take place in May.

President's Corner



Philippa Gillen
President

Happy Leap Year! What an inspirational word “leap” is – to jump or spring a long way to a great height or with great force; to accept an opportunity eagerly. My wish for all of us this year is that we will leap into creativity and stretch ourselves to higher and higher standards of excellence in our artwork.

There will be many opportunities to do just that with the many workshops that will be available this year, beginning with the James Brantley workshop in June. Also, several one- day workshops are in the planning.

So let us resolve to make more time to paint, to leap towards excellence and strive to be the best we can be. Remember, we'll definitely have more time to paint this year with an extra day.
Phil

A Three Day Workshop in New Orleans

James Brantley AWS, NWS

Dates: June 6-7-8, 2012

Time: 9:00 a.m. to 3:00 p.m.

Price: \$300 (LWS members \$250)

Location: The Studio at
3300 Dumaine St., New Orleans, LA

Reserve your spot with a \$125 deposit.

(check made out to LWS)

Mail Deposit to:

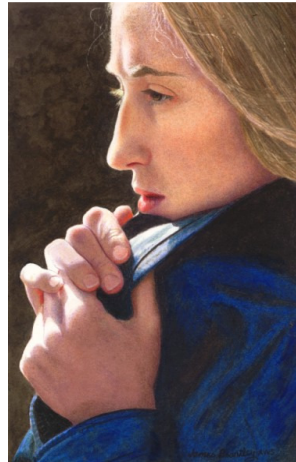
William Crowell

629 Rosa Ave.

Metairie, LA 70005

Contact Bill at: crowellart@cox.net

(Please put Brantley WORKSHOP in subject line.)



James Brantley will show how to paint a portrait in transparent watercolor that has just as much richness of color and detail as any oil painting, along with the uniquely beautiful qualities that watercolor displays with its transparent washes. Using a live model, James will demonstrate posing of the model, arranging the lighting, photographing and printing. He will then show how photos can be adjusted using programs on the computer. Working entirely from photos, he will sketch and apply underpaintings. He will demonstrate applying various washes, choice of colors for skin tones and types of palettes. James will then work with each person on their 1/8 sheet sketch.

James Brantley has been painting and drawing the people and places of Alabama and Georgia since the early '50's. His paintings have garnered many awards including First Place in the LWS 30th International Exhibition in 2000 and Second Place in the LWS 40th International Exhibition in 2010. He is a signature member of the American Watercolor Society (AWS) and National Watercolor Society (NWS). To see more of his work, visit <http://jamesbrantley.net>

Member News

Cheng-Khee Chee LWS received the George Morrison Artist Award for his international contribution to watermedia painting and a lifetime of teaching. The MN Marine Art Museum is holding a retrospective of his marine watercolors and Old Turtle illustrations through Jan. 15, 2012. The *Sea History* magazine featured his paintings in an article in conjunction with this exhibit.

Two of **Byron Levy's** paintings have been added to collections at University Baptist Church in Baton Rouge and Temple B'nai Israel. Byron has painted watercolors for over 50 years and was awarded the LWS Lifetime Achievement Award in 2005.

Carol Creel LWS won an Honorable Mention in the 42nd Annual River Road Show.

Carrie Waller was in the International Portfolio section of the December issue of *Pratique Des Arts*--the best selling French Art magazine. She won an Outstanding Watercolor award for "Anticipation" in the November FASO Bold Brush competition.

Congratulations to **Dominique Yves Agnellet LWS**, a French member of LWS, who won an Honorable Mention in the [PWS 2011 On-line Membership Exhibition](#). The latest post in his blog <http://dominiqueagnellet.eklablog.com/> is about American watercolor societies, especially Louisiana Watercolor Society and Pennsylvania Watercolor Society since he is a Signature Member of both societies.

American Frame Art club members purchasing from American Frame will receive a 5% discount. To receive the discount, use the code ALLIANCE12_5% at the time of order. www.AmericanFrame.com



Check it out: [The Louisiana Watercolor Society is on](#)

Christmas Social at the New Orleans Museum of Art

Congratulations to
Jeannie Wilke
who won the
People's Choice Award



Louisiana Watercolor Society

1327 Notting Hill Dr.
Baton Rouge, LA 70810
www.LWSart.org

Non-Profit
Organization
U.S. Postage
PAID
Permit No. 189
Baton Rouge, LA

ADDRESS SERVICE REQUESTED



Membership Form: Due in January

Mail to: 1327 Notting Hill Dr., Baton Rouge, LA 70810

Name to appear in roster: _____

Address: _____

City: _____ State: _____

Zip: _____ Home Phone: _____

Cell phone _____

E-mail address: _____

Send my newsletter to this email: _____ Yes

Web site: _____

Do you want to be listed as a teacher? _____ (Provide details.)

Annual Dues:

___New \$25 ___Renewing \$25 ___International \$30 USD

Volunteers are needed. How would you like to help?

___Exhibits ___Hospitality ___Publicity

___Telephone ___ Programs ___LWS Board

Include me in mailing lists requested by art related companies
that support LWS. ___YES ___NO

Signature: _____ Date: _____

Active 1 & 2 members must pay dues every year to maintain membership while working to earn signature status.

Signature status is granted to members after acceptance in three (3) International Shows, as long as annual dues have been paid continuously since the first acceptance.

CALENDAR

Jan. 1: Send in Dues

Jan. 17: Postmark deadline 42nd International

Jan. 19: Deadline for Hand delivered

Jan. 29: Members Meeting at NOMA

March 1-30: Archives Member Show

March 3: Archives Reception

May 5: 42nd International Exhibit opens

May 12: Reception 42nd International

May 26: Pick up paintings 42nd International

June 6-8: Brantley workshop

***Newsletter Deadline:** April 15, 2012

The newsletter is published quarterly. A current copy is posted on the **CALENDAR** page of www.LWSart.org.

LWS Pins & Pendants©

Designed by Russ Copping

Sterling Silver \$85

Gold plate over silver \$90

Size: 1 3/8 inches diameter

Prices valid until Oct. 1, 2011.

Please allow 4-6 weeks for delivery.

LWS signature jewelry is handmade
by Russ Copping.

Make check (USD) payable to Russ Copping.

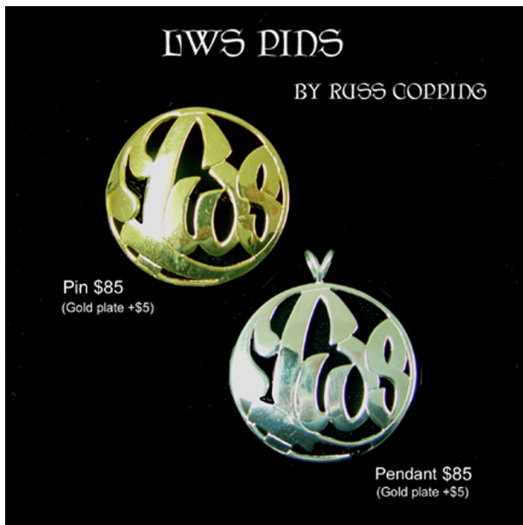
Mail to 100 Cherry Laurel Drive

Covington, LA 70433

ORDER FORM

How many?

_____ Silver Pin \$85.....	\$ _____
_____ Silver Pendant \$85.....	\$ _____
_____ Gold Plated Pin \$90.....	\$ _____
_____ Gold Plated Pendant \$90.....	\$ _____
Shipping \$5 per address	\$ _____
TOTAL.....	\$ _____



Ship to
Name _____

Address _____

Phone _____